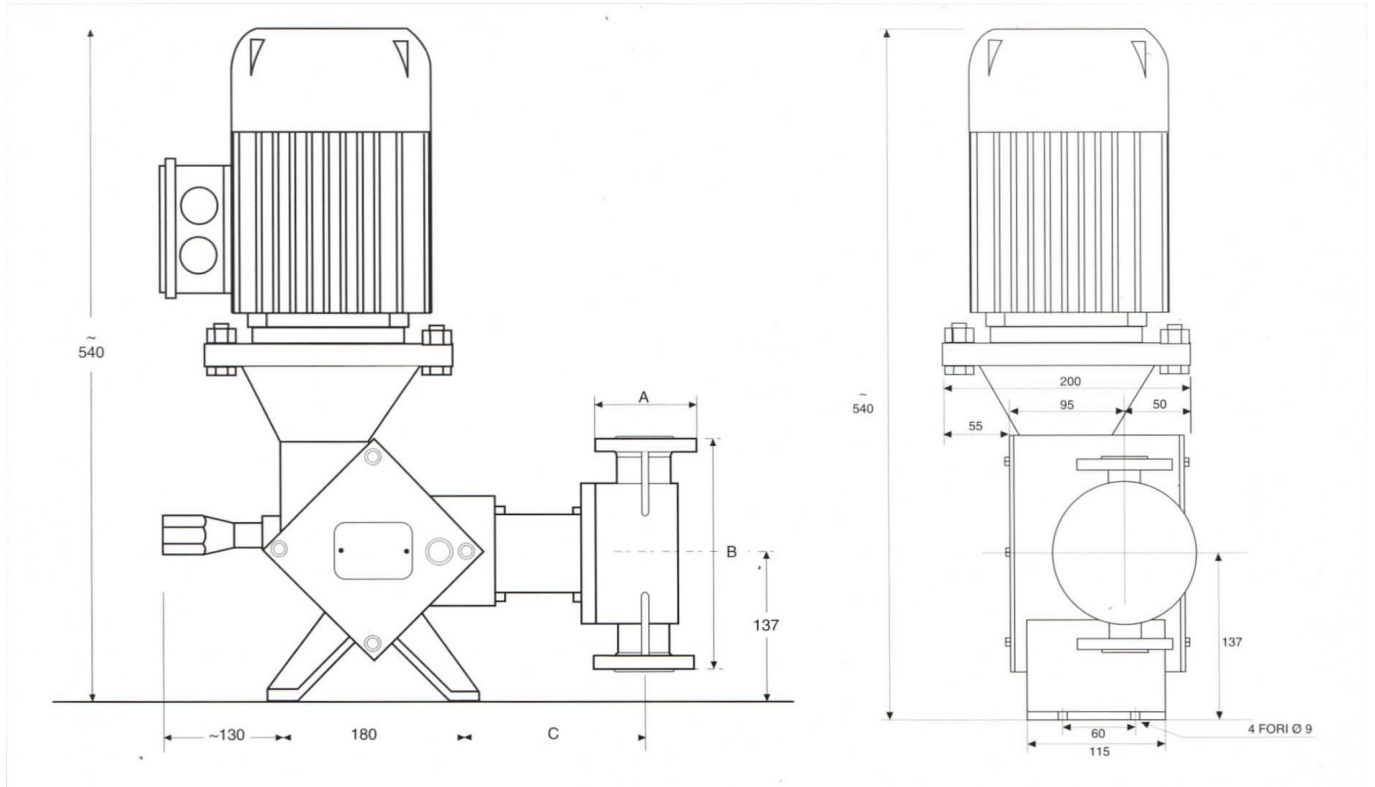




## Performance

Model	Stroke mm	Plunger mm	Speed al 1'	Capacity ma l/h	Max press. Bar 01-02	Max press. Bar 03	Max press. Bar 01-02	Max press. Bar 3
M	25	25	60	44	30(60)**	10	1/2' Gm	1/2' Gf
M	35	25	60	62	30(60)**	10	1/2' Gm	1/2' Gf
M	25	25	120	88	30 (60)**	10	1/2' Gm	1/2' Gf
M	35	25	120	124	30(60)**	10	1/2' Gm	1/2' Gf
M	25	38	60	96	28	10	DN 15	DN 15
M	35	38	60	135	28	10	DN 15	DN 15
M	25	38	120	192	28	10	DN 15	DN 15
M	35	38	120	270	28	10	DN 15	DN 15
M	25	48	60	163	17	10	DN 15	DN 15
M	35	48	60	228	17	10	DN 15	DN 15
M	25	48	120	326	17	10	DN 15	DN 15
M	35	48	120	456	17	10	DN 15	DN 15
M	25	64	60	289	9	9	DN 25	DN 25
M	35	64	60	405	9	9	DN 25	DN 25
M	25	64	120	578	9	9	DN 25	DN 25
M	35	64	120	810	9	9	DN 25	DN 25
M	25	89	60	559	5	5	DN 40	DN 40
M	35	89	60	783	5	5	DN 40	DN 40
M	25	89	120	1118	5	5	DN 40	DN 40
M	35	89	120	1566	5	5	DN 40	DN 40

## Overall dimensions



## Building materials

The parts in contact with the pumped liquid are made of materials with high chemical and mechanical resistance, in particular **the piston is made of technical ceramic with 99.9% alumina or AISI 316 or 304 stainless steel** according to the desired application. The head and mechanical components are in PVC or AISI steel made by mechanical machining from solid, to maximize the quality of the finished product compared to injection-molded solutions.

Parts	Execution .01	Execution .02	Execution .03	Execution .04	Execution .05
Pump head	AISI 316	AISI 304	PVC	AISI 316	AISI 304
Plunger	AISI 316	AISI 304	CERAMIC	CERAMIC	AISI 420
Valve	AISI 316	AISI 304	PIREX	AISI 316	AISI 420
Valve seat	AISI 316	AISI 304	PVC	AISI 316	AISI 420
Plunger seal	VITON	VITON	VITON	VITON	DUTRAL



## Dimensions

Pump Head	A .01	.02	A .03	B .01	.02	B .03	C .01	.02	C .03
25	½" GM		½" GM	135		160	180		170
38	96		110	165		170	180		170
48	95		110	165		170	180		170
64	115		120	215		220	180		170
89	150		160	275		285	185		195